

RIVER DELTA FIRE DISTRICT
16969 Jackson Slough Rd / PO Box 541
Isleton, CA 95641
(916) 777-8701

REPORT ON SERVICE CAPABILITIES
May 17, 2022

Foreword

The River Delta Fire District has been approached with a request to describe in detail the district's composition, resources, staffing, training and related information. While this information is available in various public documents and presentations, we are honoring this request to compile all of this information into one report. We were also asked to describe how we would hypothetically address a request to expand services into Delta Fire District. In response, some concepts relating to that inquiry are also included.

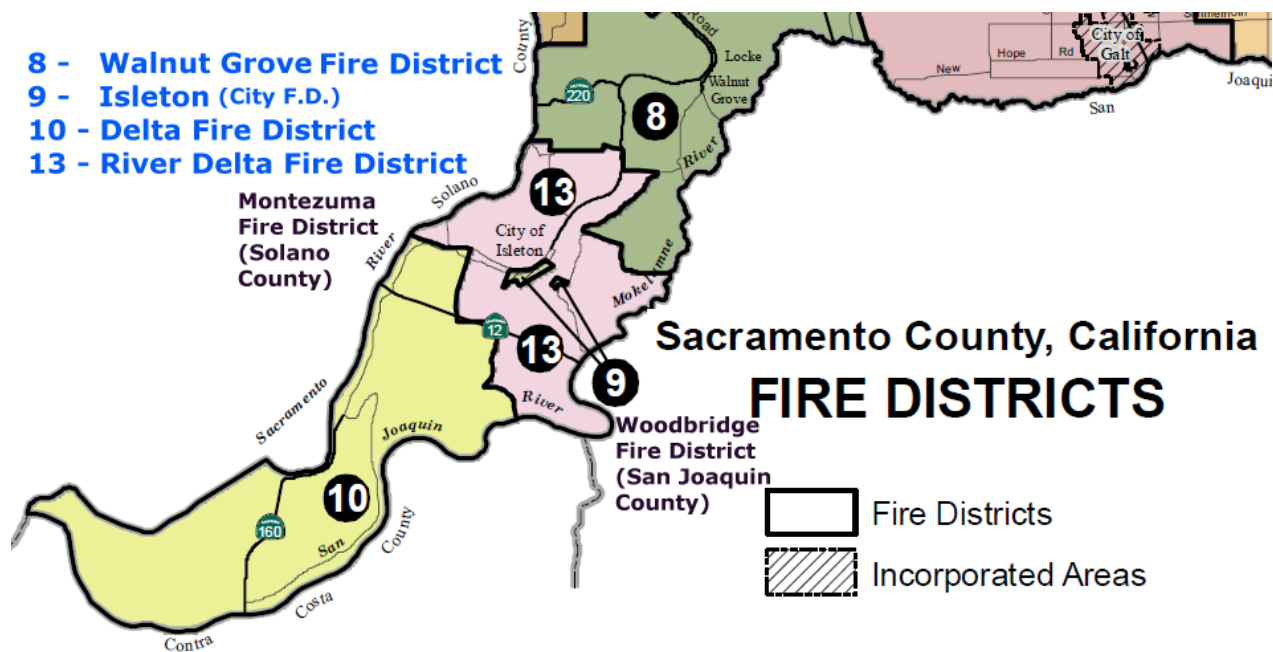
District Description

The River Delta Fire District is located in the southern Delta peninsula of Sacramento County. Comprising over 27 square miles, it is bounded by the Walnut Grove Fire District to the northeast, the Sacramento River to the northwest, the Mokelumne River to the southeast and the Delta Fire District to the southwest. The rivers also serve as county boundaries.

River Delta encircles the City of Isleton that has its own fire department. The neighboring Delta Fire District has no fire/EMS resources stationed within the district and contracts for services from the City of Rio Vista in Solano County.

The River Delta Fire District has multiple formal aid agreements with the Walnut Grove Fire District, Isleton Fire Department, Cosumnes Fire District, Courtland Fire Protection District, Herald Fire Protection District, Montezuma Fire District (Solano County) and the Woodbridge Fire District (San Joaquin County.)

River Delta participates in the state's Master Mutual Aid Agreement.



Fire Station and Resources

River Delta is currently served by one fire station located at 16969 Jackson Slough Rd.

Emergency apparatus include:

- 1 Type-1 1500 GPM fire engine with 500-gallon tank
- 1 Type-1 1000 GPM fire engine with 750-gallon tank
- 1 Type-3 Forest Service style wildland fire engine with 500-gallon tank
- 1 Type-5 brush patrol fire engine with 400-gallon tank
- 1 Tactical water tender with 1250 GPM pump, 2200-gallon tank and dual foam systems with two remote controlled turrets
- 1 Technical rescue / breathing support unit for supporting extended and complex operations
- 1 Waterway spill containment response unit
- 1 Rescue boat, inflatable, for rapid deployment
- 1 18-foot rescue boat, placed in service during planned events and peak holiday waterway activities
- Staff and utility vehicles

More detailed descriptions of these resources are described in Exhibit A.

Specialized equipment includes semi-automatic defibrillators, a thermal imaging camera, specialized extrication equipment, water rescue equipment, specialized equipment for marina incidents, capabilities for drafting from rivers, canals and sloughs, and waterway protection / spill containment equipment.

Operations and Staffing

Overview

The River Delta Fire District responds to structural, wildland, vehicle, boat and crop, fires, traffic accidents, industrial accidents, emergency medical calls, hazardous materials incidents, gas and electric hazardous conditions, emergencies involving livestock, non-emergency public assistance calls, and to a variety of other types of incidents as requested by citizens, businesses, agricultural operators and surrounding fire agencies.

The River Delta Fire District has continuously worked to forge relationships throughout the region by establishing more robust automatic and mutual aid agreements with the Montezuma Fire District, the Walnut Grove Fire District, the Woodbridge Fire District, and in the past, the Rio Vista Fire Department.

The Rio Vista Fire Department / Delta Fire District Board terminated an automatic aid agreement on August 2, 2019, and the Highway 12 mutual threat zone agreement on May 17, 2021. No agreements currently exist between the Delta Fire Protection District and the River Delta Fire District. (See Exhibit G.)

Our vision of fire service delivery includes borderless emergency response for expediently deploying the closest appropriate resources in order to better serve the public in their time of need, and also to improve firefighter safety.

River Delta Fire District is committed to continuous improvement and the constant evaluation of our services to ensure we meet community expectations and industry best practices. We stand ready to serve and protect as we respond to the evolving needs of the community, at all times providing exceptional fire and emergency services.

The Delta peninsula is a predominantly rural area where all communities have relatively limited fire and rescue resources. The River Delta Fire District is working toward bringing our automatic and mutual aid partners together to further improve coordination between our agencies, including developing collaborative training opportunities, as well as improving integration for emergency responses and other fire agency services.

We believe that improving interoperability and increasing our abilities to coordinate and work together will enhance the following areas:

- Improved firefighter and community safety
- Expansion of immediately-available response forces
- Reliable back-up during multiple calls for service
- Improved emergency response during medium and large incidents
- Common training and operational procedures

Operations Division

The Operations Division provides fire, technical rescue, and basic life support emergency medical services to an area covering more than 27 square miles that contains a broad spectrum of risks and hazards, including a population in excess of 10,000 residents and visitors during summer months.

Responding to over 400 requests for emergency service annually, the dedicated men and women of the River Delta Fire District are committed to providing extraordinary service to their community through prevention, preparedness, and emergency responses, and they strive to exceed expectations at all times.

District Command Coverage

District coverage is shared between command staff on a rotational 24-hour shift basis. Each Shift Commander is responsible for the day-to-day operations, management and performance proficiency within their respective shifts.

Engine companies are supervised by qualified Captains or Lieutenants.

The command staff and chief officers consist of:

Paul Cutino, Fire Chief

- 35-years' fire service experience
- State Fire Marshal Chief Fire Officer Certification
- Master's Degree, Emergency Services Management
- Former Asst. Fire Chief for Operations, East Bay Regional Parks District (a ten-station district covering two counties)
- State Fire Marshal Instructor

Larry Gardiner, Asst. Chief

- 55-years' fire service experience
- State Fire Marshal Chief Fire Officer Certification
- An original Assistant Chief upon the formation of River Delta

Hugh Henderson, Deputy Chief

- 40-years' fire service experience
- Associates Degree in Fire Science
- State Fire Marshal Chief Officer Certification
- Former Fire Chief, East Contra Costa Fire District
- State Fire Marshal Instructor

Chris McPeak, Battalion Chief

- 12-years' fire service experience
- State Fire Marshal Company Officer Certification
- State Fire Marshal Instructor in progress

Matthew Balzarini, Battalion Chief

- 20-years' fire service experience
- State Fire Marshal Chief Officer Certification
- Current Fire Lieutenant, City of San Francisco
- State Fire Marshal Instructor

Mark Trilevsky, Battalion Chief

- 40-years' fire service experience
- Bachelor's Degree, Fire Science
- State Fire Marshal Chief Officer Certification
- Former Fire Officer, San Ramon Valley Fire District
- State Fire Marshal Instructor

Ken Jenkins, Training Captain/Acting Battalion Chief

- 20-years' fire service experience
- State Fire Marshal Company Officer Certification
- State Fire Marshal Instructor

The EMS Division has its own supervisor (EMS Officer.)

Pamela Dodson, RN, District EMS Chief

- BS CSU-LA, Specialty in Critical Care
- Prehospital Care Coordinator, Contra Costa County EMS
- Clinical Program Manager, Resurgent Biomedical Consulting, LLC

The station and apparatus are staffed 24/7, 365 days a year, optimally with two 4-person companies. As a volunteer agency, optimal staffing is not constantly achievable. Minimum 24/7 staffing consists of six members on duty, cross-staffing the various in-service apparatus and including the Shift Commander. Increased staffing is often scheduled during critical high-risk periods such as wind events, red flag warnings and during special events days such as July 4th. Members are also called in to staff additional apparatus during significant incidents.

POSITION DESCRIPTIONS AND QUALIFICATIONS

Formal descriptions and qualifications have been established for the various positions assigned to members of the District. Complete details describing the duties and responsibilities for each of these positions, along with minimum qualifications for those members holding such positions, are provided in Exhibit E.

TRAINING

The Training Division is responsible for organizing and conducting recruit academies, scheduling shift training activities, evaluating personnel performance, ensuring that all active members are current in requisite skills and credentials, validating the completion of task books, identifying infrequent skills that warrant refreshing, and coordinating multiagency / mutual aid drills and exercises. Recruit academies are typically joint operations that include members of response partner agencies.

Beyond adhering to state identified standards such as Fire Fighter-I and medical certifications, the Training Division is responsible for evaluating various types of risks within the district and conducting drills and exercises in order that members become familiar those such unique risks and understand best practices for resolving emergencies related to those risks.

Overall, the River Delta Fire District Training Division develops, implements and maintains programs supporting the safe, efficient and effective actions of District personnel. The Training Division serves all divisions including Suppression, Management and Administration, and Support Staff. The District's Training Division is staffed with one Deputy Chief, a Training Captain, and an on-shift crew.

The Training Division coordinates specialized in-house training to convey new concepts and techniques, reinforces existing skills, and addresses modern advances in the delivery of emergency services in order to maintain high skills among district personnel. Specialized training programs cover such diverse topics as Low Angle Rope Rescue, Confined Space Rescue Operations, Wildland Urban Interface Firefighting, Auto Extrication, and the Art of Reading Smoke.

The District is committed to providing training that meets or exceeds fire service industry standards. It accomplishes this in part by utilizing instructors certified by the California State Fire Marshal, the National Wildfire Coordinating Group, the California Incident Command Certification System and other recognized certifying agencies. The District is fortunate to count among its members several such certified and qualified instructors, and where possible, will utilize some of the most notable industry professionals to instruct District personnel.

The Training Division coordinates and provides instruction for recruit firefighters through an in-house Firefighter Academy. Other District-specific training produced and delivered by the Training Division includes an Engineer Academy for personnel interested in becoming apparatus operators. Currently, academies for developing and qualifying prospective company officers and future Shift Commanders are in the process of being developed.

The Training Division maintains a very active role in joint regional training with surrounding agencies, county and state fire training officer associations, and through its affiliations with national organizations dedicated to increasing the quality and safety of fire training. This network helps fulfill the Training Division's mission to ensure District personnel will consistently provide a very high level of emergency and non-emergency services to the community and that they return home safely at the end of each shift.

Some form of training is typically a daily event.

Examples of training activities and a spreadsheet describing the certifications and qualifications of the members are provided in Exhibit B.

FIRE RESPONSE CAPABILITIES

Typical “first alarm” fire responses involve one Type-1 engine accompanied by a Type-5 engine or the tactical water tender, depending upon the type and location of incident. Some target locations would experience a response of two Type-1 engines for such scenarios as requiring an engine to provide water supply at draft for an engine operating at the fire. For extreme off-road fires a response could consist of a Type-5 and a Type-3 engine.

The tactical water tender has off-pavement capability as it has a front drive axle, but due to its size it should not be deployed where dirt roads or trails would likely not safely support its weight.

For working fires, additional assistance is provided by one or more of our response partner agencies with which we have reciprocal mutual or automatic aid agreements.

Special Incident Response Capabilities

River Delta is equipped to respond to water rescues, stranded boats, boat fires and marina fires. For incidents where fuel or other pollutants are discharged into waterways, the district's spill containment response unit carries floating booms and other containment equipment.

Collectively, the district's fire apparatus can provide over 200 gallons of various types of foam.

Some of the members are trained in emergency incidents involving livestock.

Emergency Medical Services

Emergency Medical Services are managed and coordinated by the Department's Emergency Medical Services (EMS) Division. This division is managed by Fire Chief Paul Cutino and EMS Chief / Nurse Pamala Dodson.

EMT Expanded Scope

A new California state mandate requires emergency medical technicians to receive advanced training that brings them closer to the skill level of paramedics.

This training enables California EMTs to administer and use Naloxone, epinephrine and a glucometer, per standards set forth by the California Emergency Medical Services Authority.

Naloxone, or Narcan as it is commonly referred to, is administered to counteract the effects of an opioid overdose. Epinephrine is used in cases of anaphylaxis or severe allergic reaction, and a glucometer measures blood sugar. Every River Delta Firefighter is fully trained in the administration of Narcan, Epinephrine and in the use a glucometer, pulse oximeter as well as the iGel advanced airway device.

The iGel device is used to protect a patient's airway during CPR. Our crews have already successfully utilized these skill sets while treating patients. Qualifying and

adding the expanded scope instruments to the District's EMS response bags will save lives, especially due to our district's rural location.

Quality Assurance Responsibilities

The Quality Assurance Coordinator is responsible for maintaining continuous quality control of the Basic Life Support (BLS) programs within the Fire District. Duties include development and delivery of training, ensuring patient treatment is compliant with applicable protocols, policies and best practices, and maintaining an efficient and effective EMS peer review program.

EMS Officer Responsibilities

The district's EMS Officer is assigned to various projects, tasks and assignments that support the EMS Division. These assignments include maintaining supplies, EMS equipment maintenance, and assisting in training.

Continuing Education Provider

To better serve the dedicated members of the River Delta Fire District, the Sacramento County Emergency Medical Agency has granted the district's application to be a recognized Continuing Education (CE) Training Provider.

What does this mean? River Delta Firefighters will be able to obtain training and skills in-house in order to more efficiently maintain their Emergency Medical Technician Certifications.

Fire Prevention and Life Safety

The Fire Prevention Division includes issuing burn permits, managing weed abatement, plan reviews, construction inspections and life safety inspections.

Ordinary burn permits

The Fire District can issue ordinary burn permits in accordance with applicable regulations and environmental conditions. In Sacramento County, permits to burn large agricultural piles fall under the authority of the Sacramento County Agricultural Commission. Please contact them at (916) 777-8701.

Fire Code Enforcement

Fire code enforcement services are divided into three areas, (1) Plan Review, (2) New Construction Inspections, (3) Existing Construction Inspections. Our fire inspector reviews building, site and fire protection plans for compliance with local, state and national fire codes. Once plans are approved, our fire inspector conducts on-site inspections during construction to ensure that the projects are constructed per the approved plans and in compliance with the fire codes. Finally, our fire inspectors conduct annual fire safety inspections of business within the River Delta Fire District. These inspections are provided in order to maintain a fire safe community.

Annual Fire Safety Inspections

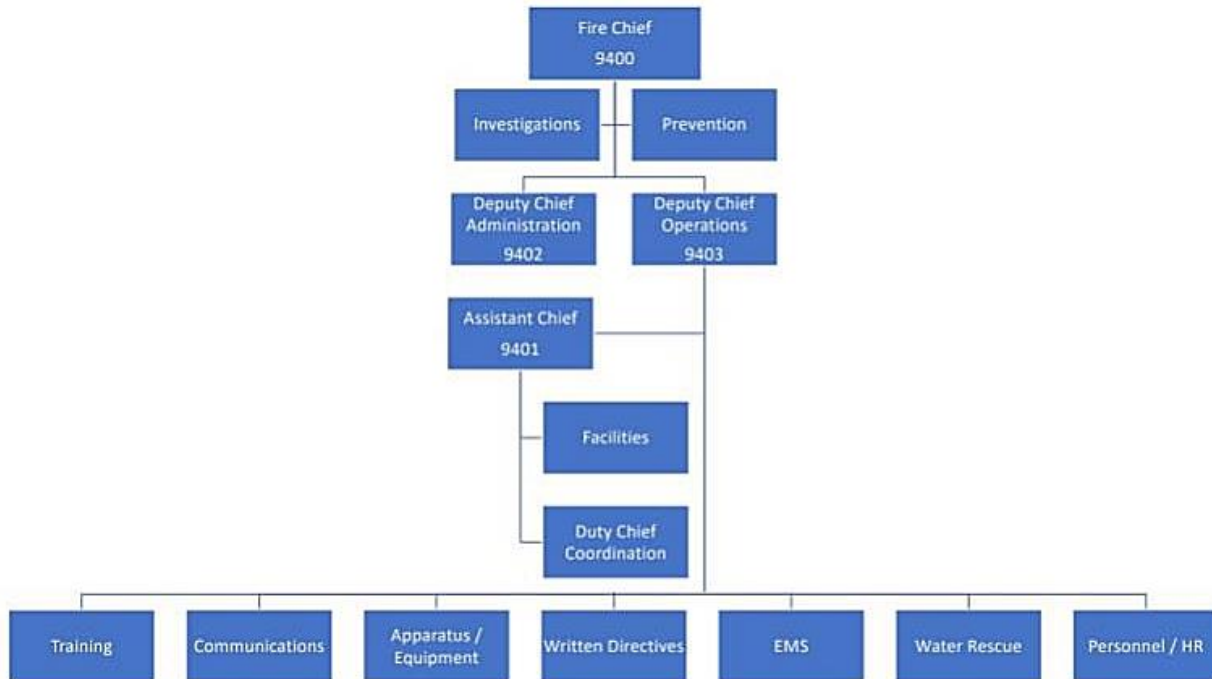
Fire agencies are required to ensure “a reasonable degree of fire safety” in public businesses and certain other occupancies.

During annual fire safety inspections, fire inspectors look for numerous items that affect the overall safety of a business. We train our inspectors to do more than just report a problem, but to become part of the solution and offer suggestions on how to correct an unsafe situation.

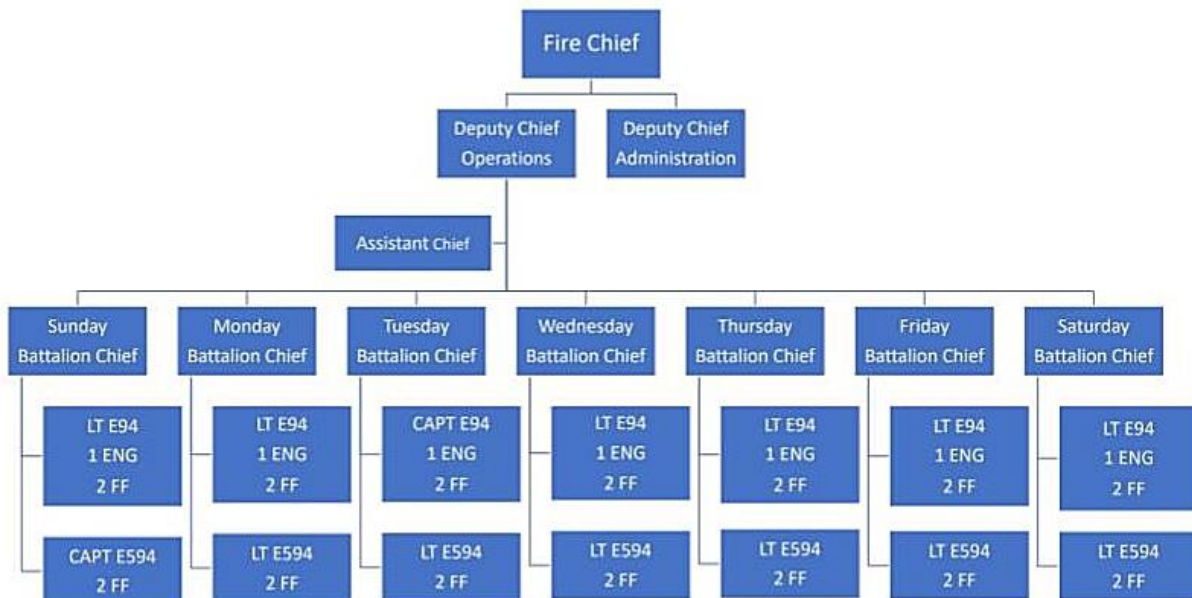
Annual Fire Safety Inspections are completed by our on-duty fire crews. Effective January 1, 2021, all annual fire safety inspections are completed using Streamline Inspections, a tablet-based software. Business owners will receive by email (1) a fire safety inspection report, (2) any issued operational permits, and (3) an invoice in a separate email. Businesses are now able to self-correct any violations found during fire inspections using the "Self-Certify" link in the email.

Fire District Structure

ORGANIZATIONAL CHART - ADMINISTRATIVE ACTIVITIES



ORGANIZATIONAL CHART - OPERATIONAL ACTIVITIES



Transparency

An open and transparent District builds public trust and keeps residents better informed and engaged in their government services. Timely and relevant District data allows the public, community leaders, decision makers, and operational managers to make informed data-driven decisions. It also improves accountability and understanding of District operations and finances.

Many transparency questions relate to District finances and the Board of Directors. The River Delta Fire District Board has a web page dedicated to provide publicly available records, including some Board minutes, financial reports, district business and information regarding operations. Additionally, the River Delta Fire District Board meets monthly during the second Tuesday of each month.

District Mission, Vision and Values

Our Mission

To preserve and protect life, environment and property, with service above all else.

Our Vision – A District that is:

- A model of excellence in fire protection and life safety programs.
- Responsive to the needs of the citizens and communities we serve.
- Committed to continuous development in all functional areas.
- Committed to an environment of trust, involvement, innovation, creativity and accountability.

Our Values

- Always do our best
- Integrity, courage and personal accountability will direct our actions.
- Foster an environment of trust.
- Treat others as we want to be treated.
- Communicate openly and share knowledge.
- Promote and respect the contributions of others.
- Nurture the potential for leadership and accomplishment in all members.
- Measure our success by the satisfaction of our citizens.

Who We Are

The River Delta Fire District is an "All Risk" department. We respond to the needs of the community regardless as to the nature of an incident. As first responders, we engage in the process of solving each problem to achieve a positive outcome.

The district runs approximately 420 calls per year and is staffed with firefighters 24/7. The River Delta Fire District offers career development opportunities for individuals pursuing a career in the fire service and has a successful reputation of mentoring firefighters to meet their career goals through quality training and work experiences. We also benefit from the participation of veteran fire personnel who are willing to contribute to the region's emergency services.

Who We Serve

The River Delta Fire District comprises approximately 27 square miles and is located along Highways 12 and Highway 160 near the Cities of Rio Vista and Isleton. Both highways are major commute and truck routes to and from the San Francisco Bay area and Sacramento / San Joaquin Valleys.

In addition to these two major highways, the District encompasses several small arteries of roads and bridges that meander adjacent to and travel over several hundred miles of major delta waterways near resorts & marinas. Those waterways include the Mokelumne River, San Joaquin River, Seven Mile slough, Potato Slough and many small tributaries. There are several restaurants, resorts and campsites along the ten-mile stretch of the Delta Loop, including Bruno's Island Yacht harbor, Moore's Riverboat Marina, Pirates' Lair Marina, Willow Berm Marina, Delta Shores Resort and Marina, Perry's Boat Harbor, B & W Marina Resort and the Oxbow Community and Marina. The delta area is a major summer destination to thousands of recreators. The district serves a year-round population of 1,800 residents. During the summer months, the population can significantly increase up to 15,000 during busy weekends.

What We Do

The River Delta Fire District engages in structural firefighting, wildland firefighting, emergency medical care and hazardous materials response, urban search and rescue, and water and flood rescue. Every member of the Department is certified as an Emergency Medical Technician and is CPR/AED certified. Emergency medical service responses and vehicle crashes account for most of our workload.

Mutual Aid and Auto Aid Agreements

We are actively working to forge relationships with surrounding fire agencies through automatic and mutual aid agreements. We have already made excellent progress with establishing robust agreements with Montezuma and Woodbridge Fire Districts, and we participate in the Sacramento County Mutual Aid Agreement, which includes several agencies in the South Sacramento County region.

ISO Rating

The River Delta Fire District Insurance Services Office (ISO), Inc. rating is currently a Class 5/5Y rating for its structural fire suppression delivery system which is a significant accomplishment for a rural district and community.

Hypothetical Expansion of Service Area

We have been requested to provide a conceptual presentation with respect to how the River Delta Fire District could provide services to the current Delta Fire District. This section of this report is solely intended to respond to that request.

Geography

Geography is a critical element to analyze with respect to envisioning such a concept. The River Delta Fire District has the assets and human resources to provide a sufficient level of coverage to Delta Fire District and River Delta's fire station is virtually adjacent to Delta's northern boundary. However, the Delta Fire District comprises the longest segment of the Sacramento County Delta Peninsula which in turn can result in less than desirable response times to the southern-most portions of Delta's territory.

Delta is currently served by the Rio Vista Fire Department that also has to enter the Delta Fire District at its northern region via the Rio Vista Bridge.

Responses from River Delta would reduce response times to the northeastern portion of Delta Fire District as compared to responses from Rio Vista. As we

analyze areas further to the south, the response times between River Delta and Rio Vista tend to equalize, with some areas expecting a slightly faster arrival of Rio Vista resources when the Helen Madere bridge is open to vehicular traffic.

The additional workload would be manageable. River Delta's primary concern is that responses to the southern portions of the Delta Fire District would exceed River Delta's present response time objectives.

Currently, River Delta periodically has a company assigned to "patrol" areas distant from the fire station and at locations where activities increase the potential for emergency calls. Patrols also tend to improve public engagement and fire and recreational safety awareness. To provide this same level of service to Delta Fire District, we would need to analyze uses, activities and hazards within the Delta Fire District.

While it is premature to discuss potentially permanently stationing a company in a high activity area within the Delta Fire District, the River Delta Fire District would intend to establish some form of company presence in those areas. Doing so would not only reduce initial company response times, it would also provide a safer working environment for River Delta members as they would become more familiar with the hazards and nuances found within the Delta district.

EMS Responses

Both River Delta and Delta Fire Districts enjoy paramedic levels of EMS services, although the delivery models differ.

River Delta Fire District staffs engine companies with EMT-Expanded Scope members. (Typically, all personnel actively assigned to response companies hold such qualifications.) Paramedic services are provided by Paramedic Ambulance Service units stationed in Isleton and Rio Vista.

Rio Vista Fire Department provides at least one paramedic on its engine company accompanied in responses by a unit from Paramedic Ambulance Service.

An important consideration when considering any changes in response entity structures involves the reasonable expectation that such proposed changes would not materially degrade services provided to the communities involved.

An analysis would be warranted to ensure that the inclusion of the Delta Fire District territory would not adversely impact the level of services provided to the current River Delta Fire District citizens and businesses, and vice-versa.

Paramedic Ambulance Service's response times into the Delta Fire District would not be materially any different than that of Rio Vista Fire Department as both entities are based in close proximity to each other. Paramedic Ambulance Company's Isleton unit is actually closer to portions of the Delta Fire District, however the Isleton operation is not currently 24/7 and availability is intermittent.

River Delta has the capacity to provide more immediate initial care to much of Delta Fire District with EMT-Expanded Scope members, with concurrent paramedic responses provided by a Paramedic Ambulance Service unit. If a Delta patrol or station concept was implemented, more prompt initial arrival could be expected for virtually all of Delta Fire District. At issue is how to address those intervals when Isleton's paramedic unit is not staffed and the Rio Vista ambulance is committed to another incident.

There are various mitigation options, however the most practical would be to contract with a licensed paramedic provider to "move up" and cover the region when both the Isleton and Rio Vista ambulances are unavailable. While incident data should be evaluated to establish likely results, it appears that such a concept could produce more consistent paramedic / transport capabilities for both districts.

The introduction of more consistent paramedic ambulance availability in the region should offset any service impacts within River Delta Fire District due to its fire/rescue services being spread over a larger area.

Impacts of the Helen Madere Memorial Bridge (Rio Vista Bridge)

The iconic Helen Madere Memorial Bridge is a 62-year-old vertical lift truss bridge that carries an average of over 22,000 vehicle trips per day with a peak traffic load of over 25,000 vehicle trips per day.

During peak months the bridge may be raised for marine traffic as frequently as 200 times per month. When open for large commercial vessels, as many as 200 vehicles may be backlogged causing delays of around 30 minutes.

On August 9, 2018 the bridge became stuck in the open position for several hours. The bridge was functionally disabled for 36 days while a gearbox was being rebuilt, whereupon CalTrans had to close the bridge for several hours during various nights in order to manually raise the bridge to let backlogged marine traffic pass.

The bridge has undergone some \$48 million in painting and renovations to improve the bridge's reliability, however access from Rio Vista will be periodically impacted due to maritime traffic and when certain maintenance activities take place.

(Citation- CalTrans, District 4.)

Summation

Providing services to or absorbing the Delta Fire District is functionally sustainable, however as with any concept, relevant data needs to be reviewed and the comparative benefits of various service models should be thoroughly examined before implementing any changes.

EXHIBIT A – Emergency Apparatus

Type 1 Engines

Type 1 fire engines are used primarily for structural firefighting and initial Emergency Medical Service (EMS) response. They are equipped with high-capacity pumps, a variety of firefighting hose lines, various types of nozzles and large diameter water supply hose. Type 1 engines carry a wide assortment of tools and equipment including air lift bags, extension and roof ladders, a generator with cords and lights, a ventilation blower, cribbing supplies, and Class B foam. Type 1 engines also carry an appropriate complement of Advanced Life Support (ALS) equipment including 12-lead ECG.

Type-1 engines are typically designated with the letter “E” followed by two digits (i.e., E-94.) Second out Type-1 engines may be designated with “E-2” (i.e., E-294.)

Engine 94 (E-94)



1991 Spartan 1500 GPM pumper, 500-gallon water tank, 4-door enclosed cab with (8) seats, (6) SCBA seats, pre-piped deck gun, 3 crosslays, large diameter discharge, 30-gallon foam tank, (2) hard suction hoses with strainer, aluminum ground and extension ladders, water rescue board, generator and lighting.

Engine 294 (E-294)



2002 HME 1871-SFO 1000 GPM pumper, auxiliary “pump and roll” pump, 750-gallon water tank, 4-door enclosed cab, FoamPro Class-a foam system, pre-piped deck gun, (2) hard suction hoses with strainer, aluminum ground and extension ladders, water rescue boards, generator and lighting.

TYPE 3 AND TYPE 5 ENGINES

Type 3 and Type 5 fire engines are used for off-road wildland firefighting and are designed to fight fires in areas unreachable or inappropriate for attack by Type 1 engines. Type 3 engines are equipped with four-wheel drive, rugged suspension and high wheel clearance for steep, off-road conditions. They are equipped with a variety of firefighting hose lines, tools and supplies. They carry a wide assortment of equipment including drip torches, backpack and floating pumps and Class A foam. They also carry a complete compliment of appropriate Advanced Life Support (ALS) equipment.

Engine 394 (E-394)



Engine 394 is a US Forest Service specification wildland fire engine suitable for off-road and back country operations. The pump is rated at 200 GPM at 300 psi, supplied by a 500-gallon tank.

Engine 594 (E-594)



Engine 594 is a more compact and more maneuverable wildland firefighting vehicle. These engines were formerly referred to as “Brush Patrol” engines.

2017 Dodge RAM 5500, 300 GPM pump and 400-gallon water tank. This unit is 4-wheel drive and contains a full complement of wildland firefighting supplies and equipment, including a floating portable pump.

Tactical Water Tender / Engine

Water Tender 94 (WT-94)

A tactical water tender is a hybrid resource that has the characteristics of both a structural fire engine and a water tender. This particular design is off-road capable and can also draft.



WT94 is an Emergency-One tactical water tender powered by a Cummins 500-HP road engine. A separate Deutz transverse diesel engine powers a 1250 GPM Class-A pump for pump and roll operation and for tactical approaches using remote control foam turrets. The unit carries 1200 gallons of water and has two 75-gallon foam tanks.

Breathing Air and Haz-Mat Support

This unit is designed to provide supplemental breathing air for extended fire control operations, carry certain supplies for hazardous materials and technical rescue incidents, and other support equipment.

Air 94 (A-94)



1988 Ford F-600, Bauer air compressor capable of filling three SCBA bottles simultaneously, rescue tools and equipment, Hurst jaws and shears, cribbing, portable generator and lighting, and rehab supplies.

WATER RESCUE AND WATERWAY SPILL CONTAINMENT

Numerous commercial and recreational activities on and alongside the peninsula's waterways produce various incidents that warrant water rescues, marine oriented fire control and spill containment. Specialized equipment is utilized to address these events.

Spill Containment

(Spill containment trailer and boat extending a boom.)



Rescue Boat 94



Chief 9401 - Command Unit



Command operations and other functions such as scene security are conducted from a 2009 Expedition XLT 4x4, 8-Passenger Command Unit.

EXHIBIT B – Training

In addition to holding regular accredited fire academies, the River Delta Fire District engages in robust regular in-service training.

The academy and the district’s training staff cover all aspects of fire suppression and control, extrication, Haz-Mat and technical rescue. Other courses include EMT – expanded scope, biosafety and bloodborne pathogens, and National Traffic Incident Management certificates.

Fire Academy Staff



Physical stamina is an essential trait. Some incidents may be of extended duration. Fire fighters must be able to complete their assignments at critical incidents without having to stop due to fatigue, and still be capable of continuing on to other essential tasks.

Performing lots of push-ups in turnout gear



Deploying hand lines, timed exercises.



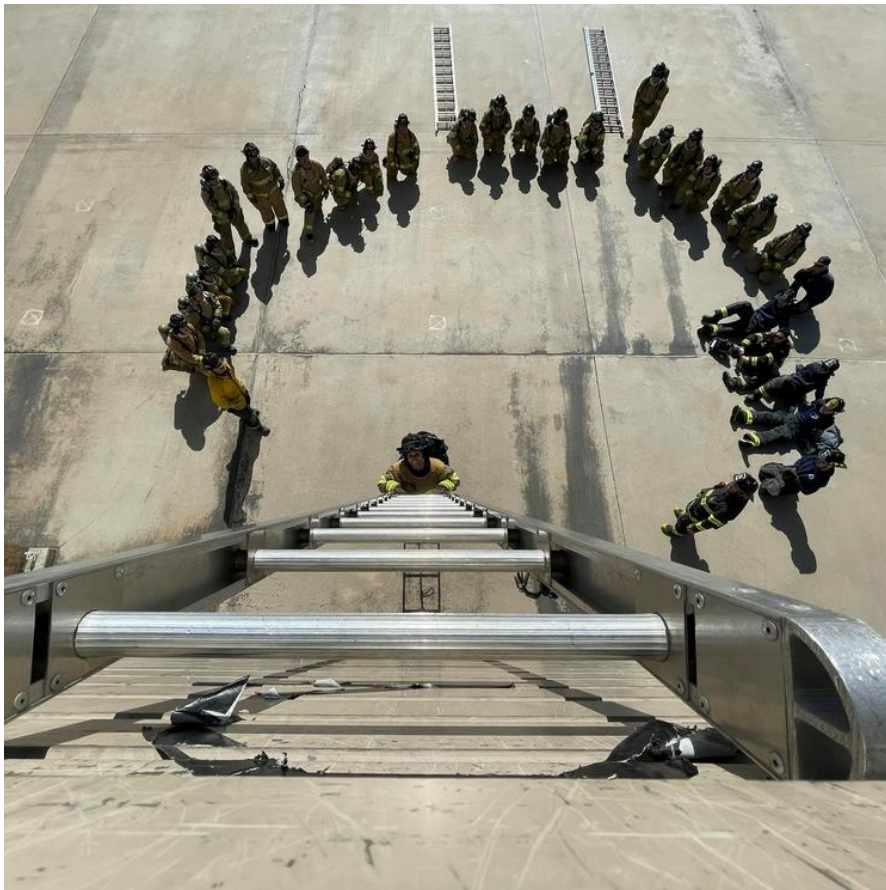
Carrying a “victim” down a ladder.



Getting comfortable with heights.



Everyone participates



Training on roof operations



Live fire training



Satisfactory skills performance.



The end of a good session.



Auto, truck and bus extrication.



Cribbing and confined space training.



Helicopter operations.



River Delta and Montezuma participants at the end of the day.



Water rescue training.



Academy graduating class



TRAINING SUMMARY, RIVER DELTA FIRE DISTRICT

RIVER DELTA FIRE DISTRICT

TRAINING	RID Hiring Docs					Core Certificates				
	Probation Manual	CPAT	Physical NFPA 1582	Live Scan	Driver's License (Endorsement Types)	Firefighter I and or IFSAC Proboard	Firefighter II	EMT-Basic	EMT Expanded Scope	CPR/AED
PERSONNEL										
L.T. Dodson, Chris	X		X	X	Class C F	X		X	X	X
F.F. Anders, Melanie	X		X	X		X		X	X	X
F.F. Esquivel, Jose	X	X	X	X		X		X	X	X
F.F. Jauregui, Carlos	X	X	X	X		X		X	X	X
F.F. Sanders, Jordan	X	X	X	X	CLASS C F	X		X	X	X
F.F. Ruff, Jack	X		X	X		X		X	X	X
L.T. Reesink, Anthony	X		X	X	CLASS C F	X		X	X	X
B.C. Costa, Jeff	X	X	X	X	CLASS C F	X		X	X	X
F.F. Brasher, James	X	X	X	X		X		X	X	X
F.F. Gliedt, Bryan	X	X	X	X		X		X	X	X
F.F. Stoller, Shane	X	X	X	X	CLASS C F	X		X	X	X
F.F. Fanucchi, Gianni	X	X	X	X		X		X	X	X
F.F. Grant, Ashlyn	X	X	X	X		X		X	X	X
F.F. Lee, Jeff	X		X	X		X		X	X	X
F.F. Sloan, Zach	X		X	X		X		X	X	X
F.F. Mitchell, Robert	X		X	X		X		X	X	X
CAPT. Jenkins, Ken	X		X	X	CLASS C F End.	X	X	X	X	X
F.F. Davis, Ronald	X	X	X	X		X		X	X	X
F.F. Gragg, Justin	X	X	X	X		X		X	X	X
F.F. Morrison, Taylor	X	X	X	X		X		X	X	X
F.F. Urioste, Alexander	X	X	X	X		X		X	X	X
F.F. Bartlett, Alex	X	X	X	X	CLASS C F	X		X	X	X
F.F. Ruiz Jr., Alexander	X		X	X		X		X	X	X
F.F. Underwood, Tom	X		X	X		X		X	X	X
F.F. Garcia, Alex	X	X	X	X		X		X	X	X
F.F. Abrego, Kiana	X		X	X		X		X	X	X
F.F. Rodriguez, Hugo	X		X	X		X		X	X	X
F.F. House, Matthew	X		X	X		X		X	X	X
L.T. Creecy, Justin	X	X	X	X	CLASS C F	X		X	X	X
F.F. Brown, Jared	X	X	X	X	CLASS C F	X		X	X	X
F.F. Capps, Hunter	X	X	X	X	CLASS C F	X		X	X	X
F.F. Collyer, Daniel	X	X	X	X		X		X	X	X
F.F. Cuneo, Kenneth	X	X	X	X		X		X	X	X
F.F. Hernandez, Ivan	X	X	X	X		X		X	X	X
F.F. Thomas, Michael	X	X	X	X		X		X	X	X
L.T. Haynes, David	X	X	X	X	CLASS C F	X		X	X	X
Eng. Wyatt, Matthew	X	X	X	X	CLASS C F	X		X	X	X
F.F. Riessen, Brett	X	X	X	X	CLASS C F	X		X	X	X
F.F. Vasquez, Rafael	X	X	X	X		X		X	X	X
F.F. Ryder, Brandon	X	X	X	X		X		X	X	X
F.F. Berry, Nathaniel	X	X	X	X		X		X	X	X
F.F. Rotor, Naomi	X	X	X	X		X		X	X	X
F.F. Morales, Damaris	X		X	X		X		X	X	X
F.F. Paya, Kevin	X	X	X	X		X		X	X	X
F.F. Edmonston, Jeff	X	X	X	X	CLASS C F	X		X	X	X
F.F. Wishom, Rafele	X		X	X		X		X	X	X
F.F. Terstegge, Christopher	X		X	X				X	X	X
F.F. Nasty, Sean	X		X	X		X		X	X	X
L.T. King, Taylor	X		X	X	CLASS C F	X	X	X	X	X
F.F. McSunas, Casey	X		X	X	CLASS C F	X		X	X	X
F.F. Olmedo, Alexander	X		X	X		X		X	X	X
F.F. Schiavone, Nick	X		X	X		X		X	X	X
F.F. Victoriano, Matthew	X	X	X	X	CLASS C F	X		X	X	X
F.F. Holdren, Joe	X		X	X				X	X	X
F.F. Osborne, Najm	X		X	X		X		X	X	X
F.F. Henry, Kenneth										
F.F. Zadeh, Andrew	X		X	X				X	X	X
Chief Cutino, Paul	X		X	X	CLASS C F	X	X	X	X	X
D.C. Henderson, Hugh	X		X	X		X		X	X	X
A.C. Gardiner, Larry	X		X	X		X		X	X	X
B.C. Cutino, Joe	X		X	X	CLASS C F	X	X	X	X	X
B.C. Costa, Jeff	X		X	X	CLASS C F	X	X	X	X	X
B.C. Trilevsky, Mark	X		X	X	CLASS C F	X	X	X	X	X
B.C. Balzarini, Matthew	X		X	X	CLASS C F	X	X	X	X	X
B.C. MCPeak, Chis	X		X	X	Class C F	X	X	X	X	X

TRAINING SUMMARY, RIVER DELTA FIRE DISTRICT (Continued)

RIVER DELTA FIRE DISTRICT

California Office of the State Fire Marshal														
TRAINING	Auto Extrication	Confined Space Rescue Awareness	Fire Control 3B	HazMat FRO	HazMat LC.	Bloodborne Pathogens	LARRO	Firefighter Survival	Driver Operator 1A	Driver Operator 1B	Fire Control 4	RIC	Animal Technical Rescue	Company Officer (List classes taken in the series)
PERSONNEL														
L.T. Dodson, Chris	X	X	X	X		X	X	X	X	X		X		
F.F. Anders, Melanie	X	X	X	X		X	X	X				X		
F.F. Esquivel, Jose	X	X	X	X		X	X	X				X		
F.F. Jauregui, Carlos	X	X	X	X		X	X	X				X		
F.F. Sanders, Jordan	X	X	X	X		X	X	X	X			X		
F.F. Ruff, Jack	X	X	X	X		X	X	X				X		
L.T. Reesink, Anthony	X	X	X	X		X	X	X	X			X		
B.C. Costa, Jeff	X	X	X	X		X	X	X	X	X		X		
F.F. Brasher, James	X	X	X	X		X	X	X				X		
F.F. Gledt, Bryan	X	X	X	X		X	X	X				X		
F.F. Stoller, Shane	X	X	X	X		X	X	X	X			X	X	
F.F. Fanucchi, Gianni	X	X	X	X		X	X	X				X		
F.F. Grant, Ashlyn	X	X	X	X		X	X	X				X		
F.F. Lee, Jeff	X	X	X	X		X	X	X				X		
F.F. Sloan, Zach	X	X	X	X		X	X	X				X		
F.F. Mitchell, Robert	X	X	X	X		X	X	X				X		
CAPT. Jenkins, Ken	X	X	X	X		X	X	X	X	X	X	X		SFT CO. Officer
F.F. Davis, Ronald	X	X	X	X		X	X	X				X	X	
F.F. Gragg, Justin	X	X	X	X		X	X	X				X		
F.F. Morrison, Taylor	X	X	X	X		X	X	X				X		
F.F. Unisto, Alexander	X	X	X	X		X	X	X				X		
F.F. Bartlett, Alex	X	X	X	X		X	X	X	X			X		
F.F. Ruiz Jr., Alexander	X	X	X	X		X	X	X				X		
F.F. Underwood, Tom	X	X	X	X		X	X	X				X		
F.F. Garcia, Alex	X	X	X	X		X	X	X				X		
F.F. Abrego, Kiana	X	X	X	X		X	X	X				X		
F.F. Rodriguez, Hugo	X	X	X	X		X	X	X				X		
F.F. House, Matthew	X	X	X	X		X	X	X				X		
L.T. Creecy, Justin	X	X	X	X		X	X	X				X		
F.F. Brown, Jared	X	X	X	X		X	X	X				X		
F.F. Capps, Hunter	X	X	X	X		X	X	X	X			X		
F.F. Collier, Daniel	X	X	X	X		X	X	X				X		
F.F. Cuneo, Kenneth	X	X	X	X		X	X	X				X		
F.F. Hernandez, Ivan	X	X	X	X		X	X	X				X		
F.F. Thomas, Michael	X	X	X	X		X	X	X				X		
L.T. Haynes, David	X	X	X	X		X	X	X	X			X		
Eng. Wyatt, Matthew	X	X	X	X		X	X	X	X	X		X		
F.F. Riessen, Brett	X	X	X	X		X	X	X				X		
F.F. Vasquez, Rafael	X	X	X	X		X	X	X				X		
F.F. Ryder, Brandon	X	X	X	X		X	X	X				X		
F.F. Berry, Nathaniel	X	X	X	X		X	X	X				X		
F.F. Rotor, Naomi	X	X	X	X		X	X	X				X		
F.F. Morales, Damaris	X	X	X	X		X	X	X				X		
F.F. Pava, Kevin	X	X	X	X		X	X	X				X		
F.F. Edmonston, Jeff	X	X	X	X		X	X	X				X		
F.F. Wishom, Rafele	X	X	X	X		X	X	X				X		
F.F. Terstegge, Christopher	X	X	X	X		X	X	X				X		
F.F. Nasty, Sean	X	X	X	X		X	X	X				X		
L.T. King, Taylor	X	X	X	X		X	X	X	X	X		X	X	
F.F. McSunas, Casey	X	X	X	X		X	X	X				X		
F.F. Olmedo, Alexander	X	X	X	X		X	X	X				X		
F.F. Schiavone, Nick	X	X	X	X		X	X	X				X		
F.F. Victoriano, Matthew	X	X	X	X		X	X	X	X			X		
F.F. Holdren, Joe	X	X	X	X		X	X	X				X		
F.F. Osborne, Najm	X	X	X	X		X	X	X				X		
F.F. Henry, Kenneth	X	X	X	X		X	X	X				X		
F.F. Zadeh, Andrew	X	X	X	X		X	X	X				X		
Chief Cutino, Paul	X	X	X	X		X	X	X				X	X	Chief Officer
D.C. Henderson, Hugh	X	X	X	X		X	X	X	X	X		X		Chief Officer
A.C. Gardiner, Larry	X	X	X	X		X	X	X				X		
B.C. Cutino, Joe	X	X	X	X		X	X	X	X	X		X		Fire Officer
B.C. Costa, Jeff	X	X	X	X		X	X	X	X	X		X		Fire Officer
B.C. Trilevsky, Mark	X	X	X	X		X	X	X	X	X		X		Fire Officer
B.C. Balzarini, Matthew	X	X	X	X		X	X	X	X	X		X		
B.C. McPeak, Chis	X	X	X	X		X	X	X	X	X		X	X	Fire Officer

TRAINING SUMMARY, RIVER DELTA FIRE DISTRICT (Continued)

RIVER DELTA FIRE DISTRICT

TRAINING	Chief Officer	Rescue Systems I	Forcible Entry	Cal Fire / National Wildfire Coordinating Group										
				Cal Fire Basic FF	Safety & Survival	RT-130	NWCG S-130	NWCG S-190	NWCG L-180	NWCG 131	NWCG S-290 Int. Behavior	NWCG S-215	NWCG FI-110	
PERSONNEL														
L.T. Dodson, Chris			X	X	X	X	X	X	X	X	X			X
F.F. Anders, Melanie			X	X	X	X	X	X	X	X	X			
F.F. Esquivel, Jose			X	X	X	X	X	X	X	X	X			
F.F. Jauregui, Carlos			X	X	X	X	X	X	X	X	X			
F.F. Sanders, Jordan			X	X	X	X	X	X	X	X	X			
F.F. Ruff, Jack			X	X	X	X	X	X	X	X	X			
L.T. Reesink, Anthony			X	X	X	X	X	X	X	X	X			
B.C. Costa, Jeff			X	X	X	X	X	X	X	X	X			
F.F. Brasher, James			X	X	X	X	X	X	X	X	X			
F.F. Gliedt, Bryan			X	X	X	X	X	X	X	X	X			
F.F. Stoller, Shane			X	X	X	X	X	X	X	X	X			
F.F. Fanucchi, Gianni			X	X	X	X	X	X	X	X	X			
F.F. Grant, Ashlyn			X	X	X	X	X	X	X	X	X			
F.F. Lee, Jeff			X	X	X	X	X	X	X	X	X			
F.F. Sloan, Zach			X	X	XX	X	X	X	X	X	X			
F.F. Mitchell, Robert			X	X	X	X	X	X	X	X	X			
CAPT. Jenkins, Ken			X	X	X	X	X	X	X	X	X	X		
F.F. Davis, Ronald			X	X	X	X	X	X	X	X	X			
F.F. Gragg, Justin			X	X	X	X	X	X	X	X	X			
F.F. Morrison, Taylor			X	X	X	X	X	X	X	X	X			
F.F. Urioste, Alexander			X	X	X	X	X	X	X	X	X			
F.F. Bartlett, Alex			X	X	X	X	X	X	X	X	X			
F.F. Ruiz Jr., Alexander			X	X	X	X	X	X	X	X	X			
F.F. Underwood, Tom			X	X	X	X	X	X	X	X	X			
F.F. Garcia, Alex			X	X	X	X	X	X	X	X	X			
F.F. Abrego, Kiana			X	X	X	X	X	X	X	X	X			
F.F. Rodriguez, Hugo			X	X	X	X	X	X	X	X	X			
F.F. House, Matthew			X	X	X	X	X	X	X	X	X			
L.T. Creecy, Justin			X	X	X	X	X	X	X	X	X			
F.F. Brown, Jared			X	X	X	X	X	X	X	X	X			
F.F. Capps, Hunter			X	X	X	X	X	X	X	X	X			
F.F. Collyer, Daniel			X	X	X	X	X	X	X	X	X			
F.F. Cuneo, Kenneth			X	X	X	X	X	X	X	X	X			
F.F. Hernandez, Ivan			X	X	X	X	X	X	X	X	X			
F.F. Thomas, Michael			X	X	X	X	X	X	X	X	X			
L.T. Haynes, David			X	X	X	X	X	X	X	X	X			
Eng. Wyatt, Matthew			X	X	X	X	X	X	X	X	X			X
F.F. Riessen, Brett			X	X	X	X	X	X	X	X	X			
F.F. Vasquez, Rafael			X	X	X	X	X	X	X	X	X			
F.F. Ryder, Brandon			X	X	X	X	X	X	X	X	X			
F.F. Berry, Nathaniel			X	X	X	X	X	X	X	X	X			
F.F. Rotor, Naomi			X	X	X	X	X	X	X	X	X			
F.F. Morales, Damaris			X	X	X	X	X	X	X	X	X			
F.F. Paya, Kevin			X	X	X	X	X	X	X	X	X			
F.F. Edmonston, Jeff			X	X	X	X	X	X	X	X	X			
F.F. Wishom, Rafele			X	X	X	X	X	X	X	X	X			
F.F. Terstegge, Christopher			X	X	X	X	X	X	X	X	X			
F.F. Nasty, Sean			X	X	X	X	X	X	X	X	X			
L.T. King, Taylor			X	X	X	X	X	X	X	X	X	X		X
F.F. McSunas, Casey			X	X	X	X	X	X	X	X	X			
F.F. Olmedo, Alexander			X	X	X	X	X	X	X	X	X			
F.F. Schiavone, Nick			X	X	X	X	X	X	X	X	X			
F.F. Victoriano, Matthew			X	X	X	X	X	X	X	X	X			
F.F. Holdren, Joe			X	X	X	X	X	X	X	X	X			
F.F. Osborne, Najm			X	X	X	X	X	X	X	X	X			
F.F. Henry, Kenneth			X	X	X	X	X	X	X	X	X			
F.F. Zadeh, Andrew			X	X	X	X	X	X	X	X	X			
Chief Cutlino, Paul	Exec. Chief Officer	X	X	X	X	X	X	X	X	X	X	X	X	X
D.C. Henderson, Hugh	Exec. Chief Officer	X	X	X	X	X	X	X	X	X	X			
A.C. Gardiner, Larry			X	X	X	X	X	X	X	X	X			
B.C. Cutlino, Joe		X	X	X	X	X	X	X	X	X	X	X	X	
B.C. Costa, Jeff		X	X	X	X	X	X	X	X	X	X	X	X	
B.C. Trilevsky, Mark	Chief Officer	X	X	X	X	X	X	X	X	X	X			
B.C. Balzarini, Matthew	Chief Officer	X	X	X	X	X	X	X	X	X	X			
B.C. MCPeak, Chis	Chief Officer	X	X	X	X	X	X	X	X	X	X			

TRAINING SUMMARY, RIVER DELTA FIRE DISTRICT (Continued)

RIVER DELTA FIRE DISTRICT

TRAINING	ICS / NIMS					MISC						
	FI-210	NWGC S-231 Engine Boss	ICS 100	ICS 200	ICS 300	ICS 400	NIMS 700/800	National Traffic Incident Mgmt Cert	Rescue Swimmer	Rescue Boat Operator	College Degree	SFT Instructor I
PERSONNEL												
L.T. Dodson, Chris		X	X	X			X					
F.F. Anders, Melanie			X	X			X					
F.F. Esquivel, Jose			X	X			X					
F.F. Jauregui, Carlos			X	X			X					
F.F. Sanders, Jordan			X	X			X					
F.F. Ruff, Jack			X	X			X					
L.T. Reesink, Anthony		X	X	X			X					
B.C. Costa, Jeff			X	X			X				A.S.	
F.F. Brasher, James			X	X			X					
F.F. Gliedt, Bryan			X	X			X					
F.F. Stoller, Shane			X	X	X		X					
F.F. Fanucchi, Gianni			X	X			X					
F.F. Grant, Ashlyn			X	X			X					
F.F. Lee, Jeff			X	X			X					
F.F. Sloan, Zach			X	X			X					
F.F. Mitchell, Robert			X	X			X					
CAPT. Jenkins, Ken		X	X	X		X	X					X
F.F. Davis, Ronald			X	X			X		X			
F.F. Gragg, Justin			X	X			X		X			
F.F. Morrison, Taylor			X	X			X		X			
F.F. Urioste, Alexander			X	X			X		X			
F.F. Bartlett, Alex			X	X			X		X			
F.F. Ruiz Jr., Alexander			X	X			X		X			
F.F. Underwood, Tom			X	X			X					
F.F. Garcia, Alex			X	X			X		X			
F.F. Abrego, Kiana			X	X			X					
F.F. Rodriguez, Hugo			X	X			X					
F.F. House, Matthew			X	X			X					
L.T. Creecy, Justin			X	X			X		X			
F.F. Brown, Jared			X	X			X		X			
F.F. Capps, Hunter		X	X	X			X		X			
F.F. Collyer, Daniel			X	X			X		X			
F.F. Cuneo, Kenneth			X	X			X		X			
F.F. Hernandez, Ivan			X	X			X		X			
F.F. Thomas, Michael			X	X			X		X			
L.T. Haynes, David		X	X	X			X		X			
Eng. Wyatt, Matthew			X	X			X		X			
F.F. Riessen, Brett			X	X			X		X			
F.F. Vasquez, Rafael			X	X			X		X			
F.F. Ryder, Brandon			X	X			X		X			
F.F. Berry, Nathaniel			X	X			X		X			
F.F. Rotor, Naomi			X	X			X					
F.F. Morales, Damaris		X	X	X			X					
F.F. Paya, Kevin			X	X			X		X		B.S.	
F.F. Edmonston, Jeff			X	X			X		X		B.S.	
F.F. Wishom, Rafele			X	X			X					
F.F. Terstege, Christopher			X	X			X					
F.F. Nasty, Sean			X	X			X					
L.T. King, Taylor		X	X	X			X		X		A.S.	
F.F. McSunas, Casey			X	X			X		X		B.S.	
F.F. Olmedo, Alexander			X	X			X		X		A.S.	
F.F. Schiavone, Nick			X	X			X		X			
F.F. Victoriano, Matthew			X	X			X		X		A.S.	
F.F. Holdren, Joe			X	X			X		X			
F.F. Osborne, Najm			X	X			X		X			
F.F. Henry, Kenneth											B.S.	
F.F. Zadeh, Andrew			X	X			X				B.A.	
Chief Cutino, Paul	X		X	X	X		X		X		B.S. M.S.	X
D.C. Henderson, Hugh	X		X	X	X	X	X				A.S.	X
A.C. Gardiner, Larry			X	X			X					X
B.C. Cutino, Joe			X	X	X		X					X
B.C. Costa, Jeff			X	X	X		X				A.S.	X
B.C. Trilevsky, Mark		X	X	X	X		X		X			X
B.C. Balzarini, Matthew			X	X		X	X					X
B. C. McPeak, Chis		X							X			X

TRAINING SUMMARY, RIO VISTA FIRE DEPARTMENT

Presented for intensity and diversity comparison purposes only.
This matrix is dated and additional training likely has been provided.

RVFD Certs and Quals

Name	Physical Date	Firefighter1	Issue Date	Firefighter2	Issue Date	Driver Operator	Issue Date	Company Officer	Issue Date
Scott Barenhus	Current	Yes	5/2/1996	Yes	11/29/2001	Yes	5/18/2013	Yes	04/13/07
Kenny Williams	Current	Yes	4/21/2006	No		Yes	5/20/2005	Yes	06/27/07
Brandon Wilson	Current	Yes	4/24/1998	Yes	02/02/2002	Yes	2/6/1998	Yes	10/24/07
Alex Bosworth	Current	Yes	6/11/2013	Yes	3/11/2018	Yes	1/31/2014	No	
William Ladley	Current	Yes	2/14/2011	Yes	8/18/2016	Yes	11/22/2013	Yes	02/12/16
Ryan Cassidy	Current	Yes	13/18/2009	Yes	2/24/2015	Yes	6/2/2017	No	
Joseph Butler	Current	Yes	8/6/2009	Yes	8/7/2009	Yes	1/25/2009	Yes	06/01/15
Matthew McCarthy	Current	Yes	3/33/2000	Yes	3/22/2007	Yes	2/17/2002	Yes	02/27/15
Will Coelho	Current	Yes	12/17/2018	No		No		No	
Matthew Ramold	Current	Yes	12/20/2013	No		Yes	9/25/2016	No	
Anthony Glann	Current	Yes	4/25/2013	Yes	12/27/2017	Yes	2/23/2013	No	
Richard Cotter	Current	Yes	12/18/2015	No		No		No	
Matthew Gregory	Current	Yes	5/19/2014	No		Yes	12/31/2016	No	
Adnan Rana	Current	No		No		No		No	

(Additional certifications for these members listed above.)

Name	County PM/EMT Card	Expiration Date	ACLS	Expiration Date	PALS	Expiration Date	ITLS/PHTLS	Expiration Date	CPB	Expiration Date
Scott Barenhus	Yes - EMT	4/30/2023	N/A		N/A		N/A		Yes	4/30/2023
Kenny Williams	Yes - EMT	4/30/2023	N/A		N/A		N/A		Yes	3/31/2023
Brandon Wilson	Yes - PM	8/31/2022	Yes	3/31/2023	Yes	3/31/2023	Yes	1/31/2025	Yes	7/31/2022
Alex Bosworth	Yes - PM	5/31/2021	Yes	3/31/2023	Yes	3/31/2023	Yes	1/31/2025	Yes	2/28/2023
William Ladley	Yes - EMT	1/31/2022	N/A		N/A		N/A		Yes	8/31/2021
Ryan Cassidy	Yes - EMT	6/30/2022	N/A		N/A		N/A		Yes	12/31/2021
Joseph Butler	Yes - PM	6/30/2021	Yes	2/28/2023	Yes	2/28/2023	Yes	2/28/2025	Yes	04/31/2023
Matthew McCarthy	Yes - PM	3/31/2023	Yes	3/19/2023	Yes	3/19/2023	Yes	1/31/2025	Yes	2/28/2022
Will Coelho	Yes - PM	6/30/2021	Yes	11/30/2021	Yes	12/31/2021	Yes	1/31/2023	Yes	11/30/2021
Matthew Ramold	Yes - PM	5/31/2022	Yes	9/30/2022	Yes	1/31/2023	Yes	10/31/2022	Yes	10/18/2022
Anthony Glann	Yes - PM	3/31/2022	Yes	10/31/2022	Yes	9/30/2022	Yes	1/31/2025	Yes	1/31/2021
Richard Cotter	Yes - EMT	12/31/2021	N/A		N/A		N/A		Yes	10/31/2021
Matthew Gregory	Yes - EMT	1/31/2023	N/A		N/A		N/A		Yes	6/30/2022
Adnan Rana	Yes - EMT	7/31/2022	N/A		N/A		N/A		Yes	8/31/2021

“Fueling” a dependable crew on the job.



“Everyone Goes Home”



Exhibit C

California State Fire Marshal Instructor Qualifications

Fire Chief, Paul Cutino

- Chief Fire Officer 3A
- Chief Fire Officer 3B
- Chief Fire Officer 3C
- S-219 Firing Operations
- S-230 Crew Boss - Single Resource
- S-231 Engine Boss - Single Resource
- S-190 Intro to Wildland Fire Behavior
- S-130 Fire Fighter Training
- S-131 Fire Fighting Training
- S-270: Basic Air Operations
- S-290: Inter Wildland Fire Behavior
- S-339 Division/Group Supervisor
- Incident Command Systems 100 & 200
- Incident Command Systems ICS-300 Intermediate
- Incident Command Systems ICS-400 Advanced
- Confined Space Rescue Awareness
- Open Water Rescue – Basic
- Fire Investigation 1A
- Fire Investigation 1B
- Fire Investigation 1C
- Fire Inspector 1D
- Fire Inspector 1B
- Fire Inspector 1A
- Fire Inspector 1C
- Fire Fighter 1 & 2
- Fire Fighter 1 Lead Evaluator
- Fire Fighter 1 Skills Evaluator
- Fire Fighter 2 Skills Evaluator
- Fire Fighter 2 Lead Evaluator
- Company Officer 2A
- Company Officer 2B
- Company Officer 2E
- Vehicle Extrication
- Driver Operator IA

Deputy Chief, Matthew Balzarini

- Hazardous Materials First Responder Operational
- Hazardous Materials First Responder Awareness
- Vehicle Extrication
- I-200
- Fire Fighter Survival
- Fire Fighter 1 Skills Evaluator
- Fire Fighter 2 Skills Evaluator
- I-300 Intermediate ICS
- I-400 Advanced ICS
- Fire Control 3: Live Fire
- Fire Control 4
- Fire Fighter 2 Skills Evaluator

Training Captain, Ken Jenkins

- I-200
- Chief Fire Officer 3A
- Chief Fire Officer 3C
- Chief Fire Officer 3C
- S-219 Firing Operations
- S-230 Crew Boss - Single Resource
- S-231 Engine Boss - Single Resource
- S-190 Intro to Wildland Fire Behavior
- S-130 Fire Fighter Training
- I-200
- Fire Investigation 1C
- Fire Fighter 1 & 2
- Firefighter Survival
- Open Water Rescue Basic

Exhibit D (Snapshot)

Examples of training subjects and hours spent

River Delta Fire District

Isleton, CA

This report was generated on 3/10/2022 8:42:46 PM



Summary (ISO) Training Hours for Personnel per Training Code Category per Location for Date Range

Location: All Location(s) | Training Code(s): All Training Codes | Personnel: All Personnel | Start Date: 01/01/2021 | End Date:

Vasquez, Rafael	
ISO Company Training	8:30
ISO Company Training - Station 94	5:30
Probationary Firefighter Training	3:30
Probationary Firefighter Training - Station 94	2:00
Scenario Training	7:00
Scenario Training - Station 94	7:00
TOTAL HOURS:	33:30
Victoriano, Matthew	
ISO Company Training	5:30
ISO Company Training - B and W Resort Marina	2:00
ISO Company Training - Oxbow Marina	1:00
ISO Company Training - Station 94	11:00
ISO Existing Driver Operator Training - Station 94	0:30
ISO New Driver Operator Training	1:00
ISO New Driver Operator Training - B and W Resort Marina	1:00
ISO New Driver Operator Training - Station 94	1:30
Scenario Training	5:00
Scenario Training - B and W Resort Marina	1:00
Scenario Training - Station 94	5:30
Scenario Training - Willow Berm Marina	2:30
TOTAL HOURS:	37:30
Wishom, Rafele	
ISO Company Training	12:30
ISO Company Training - Station 94	5:00
ISO Existing Driver Operator Training	2:00
ISO Existing Driver Operator Training - Station 94	0:30
ISO New Driver Operator Training	6:00
ISO New Driver Operator Training - Oxbow Marina	0:00
ISO New Driver Operator Training - Station 94	0:30
Probationary Firefighter Training	4:00
Probationary Firefighter Training - Station 94	1:30
Scenario Training	2:30
Scenario Training - Oxbow Marina	2:30
Scenario Training - Station 94	4:00
TOTAL HOURS:	41:00
Wyatt, Matthew	
ISO Company Training	23:15
ISO Company Training - B and W Resort Marina	3:00
ISO Company Training - Oxbow Marina	2:30
ISO Company Training - Station 94	6:45
ISO Existing Driver Operator Training - Station 94	1:00
ISO New Driver Operator Training	0:15
ISO New Driver Operator Training - Station 94	1:00
Probationary Firefighter Training	9:00
Probationary Firefighter Training - Station 94	10:00
Scenario Training	17:15
Scenario Training - 922 W. Brannan Isl. rd	2:00
Scenario Training - Oxbow Marina	5:30
Scenario Training - Station 94	5:30
TOTAL HOURS:	87:00
TOTAL PERSONNEL HOURS:	2520:55

Exhibit E

RIVER DELTA FIRE DISTRICT KEY PERSONNEL QUALIFICATIONS and POSITION DESCRIPTIONS

Note: The specifications described for various positions are intended only to present a descriptive summary of the range of duties and responsibilities as well as the individual qualifications associated with specified positions. Therefore, specifications may not include all duties performed by individuals within a classification. In addition, specifications are intended to outline the minimum qualifications necessary for entry into the position and do not necessarily convey all of the qualifications of incumbents holding such positions.

FIRE CHIEF

General Functions

Under administrative direction, the Fire Chief is responsible for the overall management of the Fire District, including fire prevention, suppression, inspection, hazardous materials issues, emergency medical incidents and emergency services; performs difficult and responsible administrative work in connection with carrying out District goals, objectives and priorities.

Essential Functions

The essential functions of this position include, but are not limited to, the following:

Plans, organizes and directs all activities of the Fire District; develops policies, rules and procedures for the effective operation of the District; establishes District goals, objectives and priorities; prepares and administers the District's budget; provides administrative direction to activities relating to the effective utilization of personnel, and care and maintenance of District facilities and equipment; directs the enforcement of state regulations, laws, codes and local ordinances relating to fire prevention, building/fire inspections and safety;

manages the selection, development and discipline of personnel; directly supervises the officer responsible for District operations, and the manager responsible for aquatic/first-aid services; directs the proper planning and performance of fire prevention enforcement programs, resource management and habitat improvement through a program of prescribed burning, public relations programs, search and rescue activities, and training programs; manages the hazardous materials plan and the disaster preparedness plan; implements the incident command system; coordinates District activities with other District functional leads and outside agencies; prepares or directs preparation of proposals and reports concerning District activities; performs review and evaluation of fire-related design and environmental impact issues; and directs incident command for major emergencies.

Other Functions and duties

Other functions and duties related to this position include representing the District at a variety of meetings; serving as liaison with other public agencies; speaking before public and professional groups; using personal computers to perform word processing and spreadsheet functions; performing other duties as required.

The Fire Chief reports directly to the River Delta Fire District Board of Directors.

FIRE BATTALION CHIEF

Knowledge, Skills and Abilities

Knowledge of principles and practices of fire suppression/prevention with particular emphasis on wildland, agricultural and marine facilities firefighting; pertinent state laws and regulations; coordination and use of fire equipment, including helicopters and fixed wing aircraft; administrative techniques, principles, practices and procedures particularly as applicable to overall management of a fire District; supervision principles and practices. Skills to effectively formulate and administer sound District policy in the areas of general fire science, development-related issues, search and rescue, hazardous materials, emergency planning, incident command theory and protocols; supervise the

management of major fires; exercise sound judgement, resourcefulness and leadership; ability to communicate effectively, both orally and in writing; utilize personal computers and computer software including word processing, spreadsheets and GIS software; establish and maintain positive and cooperative working relationships with those contacted in the course of work at all levels, with a focus on quality service to internal and external customers.

Minimum Qualifications

Education: Associates degree from an accredited college with major work in fire science/administration, business or public administration, or a closely related field.

Experience: Five years of increasingly responsible supervisory experience in fire suppression and prevention, with three years in a command position.

Licenses, Certificates and Special Requirements:

- A valid California driver's license with Firefighter Endorsement (or) Class B-Commercial, with all the proper endorsements.
- Cardiopulmonary Resuscitation certification (CPR/AED).
- California State EMT Certified.
- California State Firefighter I.
- California State Company Officer (preferred)
- Haz-Mat FRO•ICS 300 (ICS 400 preferred)
- Ability to be "Red-Carded" as a Strike Team Leader within 1-year of assignment
- S-215 (Fire Operations in the WUI)
- PC 832 POST (preferred)

→ Or an equivalent combination of education and experience

Desirable Qualifications

Company Officer Certification from the Office of the California State Fire Marshal.

FIRE CAPTAIN / FIRE LIEUTENANT

Essential Functions (including but not limited to the following)

- Supervise engine company operations and personnel
- Maintain overall company proficiency and discipline
- Promote an appropriate safety culture
- Promote fire safety by organizing training sessions, talks, and seminars
- Review and implement safety policies and procedures at residential and commercial properties
- Provide company members with demonstrations on how to effectively operate firefighting equipment
- Conduct exercises to acquaint company personnel with applicable emergency response procedures
- Ensure availability of water supply at potential emergency scenes by testing fire hydrants to confirm they are operational
- Respond to emergency incidents by ensuring safe and appropriate actions relative to apparatus responses to fire scenes, operating firefighting equipment to extinguish fire, providing medical care and performing rescues
- Follow manufacturer's instructions to provide appropriate preventive maintenance to ensure apparatus and equipment are in reliable working order

Ability to

- Organize and schedule daily activities
- Analyze emergency response and operations problems
- Drive and pump fire engines, brush patrols and rescues
- Maintain accurate records
- Prepare clear and concise reports and other written materials
- Competently perform all tasks and skills typically undertaken by subordinate personnel, and ensure that activities in which subordinates engage comply with professional standards and applicable safety protocols.

FIREFIGHTER

This volunteer position is classified as a non-supervisory position under general supervision, performs the full array of duties customarily assigned to firefighters including, but not limited to, fire suppression, emergency medical services, and fire prevention activities; participates in training exercises, studies contemporary firefighting techniques, assists in the maintenance and care of all station facilities, apparatus, and equipment, and performs other duties as assigned by officers of the fire District.

Distinguishing Characteristics

The ideal recruit candidate will be one who has recently graduated a CSFM accredited fire academy and wishes to complete their California State Firefighter I and II Task books, and obtain the required experience to obtain a career position in the fire service. Individuals must be highly motivated. Those qualified to staff engine companies are required to work one (1) 24-hour shift per week upon completing appropriate orientation on apparatus, equipment and District procedures. All staff members of River Delta are volunteer and at-will. Like most positions in River Delta, the Firefighter position is designed to provide experience for those aspiring to promote or gain a career in the Fire Service. Career focus and progression is required.

Supervision

General supervision is provided by the Fire Captain, Fire Lieutenant or Battalion Chief.

Working Conditions

This position will likely require performing strenuous tasks for extended periods of time, requiring lifting and carrying equipment weighing 45 pounds and over, pulling, pushing, reaching above the shoulder, crawling, kneeling, climbing and bending; making rapid transitions from rest to significant exertion without warm-up periods; and working inside or outside under difficult conditions. Firefighters

perform physically demanding work wearing self-contained breathing apparatus and heavy personal protective equipment while performing firefighting tasks in hot, humid atmospheres. Firefighters perform a variety of tasks on slippery, uneven, or hazardous surfaces, work on ladders and roofs, perform complex tasks during life-threatening emergencies, relying on senses of sight, hearing, smell and touch to help determine the nature of and threat posed by the emergency, maintain personal safety and make critical decisions in a confusing, chaotic, and potentially life-threatening environment throughout the duration of a critical incident or emergency response. Firefighters work closely with others, deal with people in trauma and risk exposure to blood-borne pathogens. The position also requires individuals to ride on or operate motor vehicles operating air horns and sirens, subjecting firefighters to high levels of noise, vibration, electrical energy, moving objects, and vehicles. Firefighters are exposed to many outside elements such as dust, toxic chemicals, fumes, smoke, ember casts and gases.

Knowledge / Skills / Abilities

(The following examples provide a representative sample of the minimum qualifications required to perform essential duties of the position)

Knowledge of:

- Principles and practices in firefighting operations
- Principles, techniques, strategy, materials and equipment used in fire suppression, investigation and prevention, rescues and related emergency responses
- Methods and practices of providing emergency medical response at the basic life support level; hazardous material and chemical spill response, and applicable state and federal laws, codes, ordinances and regulations
- Safety practices and precautions pertaining to the work being performed
- Working knowledge of District chain-of-command, operational characteristics and response procedures.

Credentials:

- Valid California Class C driver's license.
- Cardiopulmonary Resuscitation Certification (Healthcare provider CPR/AED).
- Title 22 Emergency First Responder.
- EMT-I Certification (CA State, preferred)
- Graduation from an accredited academy with a course completion certificate.
- California State Firefighter I (Preferred) ^{Note 1}
- Haz-Mat FRO
- ICS 100 (200 preferred)

Note 1: Acceptable would be a combination of education and experience that would meet the minimum qualifications to perform in this position.

Typical methods of obtaining prerequisite knowledge include attendance at a local community college or university with major course work in fire science, participating in a State Fire Marshal approved academy course, and/or experience as a firefighter with a fire protection agency where agency-provided training is comparable with contemporary Firefighter-I standards of practice.

Exhibit F

ACCOMPLISHMENTS 2019 - PRESENT

Operational Accomplishments

- ✓ Established Automatic Aid Agreements with Montezuma and Woodbridge Fire Districts.
- ✓ Staffed two engine companies 24/7 on most days of the week and during critical fire weather.
- ✓ Obtained accreditation through Sacramento County Emergency Medical Agency (EMSA) as Continuing Education Provider.
- ✓ Obtained EMT expanded scope of practice from Sacramento County EMS to utilize a glucometer, advanced airway device (iGel), and administration of Narcan and epinephrine.
- ✓ Developed an apparatus replacement and maintenance program.
- ✓ Acquired an additional Type I Engine through a donation from Novato Fire Protection District.
- ✓ Significantly increased staffing from (22) Firefighters to (42) Firefighter/EMT's.
- ✓ Developed Fire Academy and Recruitment Training Program.
- ✓ Developed a new website (www.riverdeltafire.com)
- ✓ Developed a firefighter-Intern program and actively trained (35) interns in a pre-fire academy setting, 1-2 days per month.
- ✓ Implemented financial and operational policies and procedures.
- ✓ Developed comprehensive in-service firefighter training plan.

- ✓ Instituted new online training records management system.
- ✓ Added three on-shift Battalion Chiefs and an EMS Chief
- ✓ Acquired a Type-3 engine and a Tactical Water Tender from the FEPP program

Grants Awarded

- ✓ Awarded a \$37,000 grant from the California Office of Traffic Safety for auto extrication tools (Jaws of Life)
- ✓ Awarded a \$37,000 grant from the California Office of Traffic Safety for auto extrication tools (Heavy Rescue 42 Stabilizers and Heavy Rescue Air Bags)
- ✓ Awarded a \$25,000 grant for structural PPE from Firehouse Subs
- ✓ Awarded a \$20,000 grant from the California Fire Foundation Wildland personal protective equipment and related gear
- ✓ Awarded a \$30,000 grant from the CalFire Volunteer Firefighter Grant Program for Communications Equipment
- ✓ Awarded a \$35,000 grant from the California Department of Fish and Wildlife office of Spill Prevention and Response for oil spill equipment and a trailer
- ✓ Awarded a \$50,000 grant for structural PPE from the Assistance to Firefighters Grant Program

Grants Submitted / Potentially Pending

- ✓ Submitted a \$650,000 grant request for a type I apparatus from the Assistance to Firefighters Grant Program.
- ✓ Submitted a \$350,000 grant request for recruitment, retention and staffing from the Assistance to Firefighters Grant Program's SAFER grant program.
- ✓ Submitted a \$30,000 grant request to the Rural Fire Capacity Program administered by CalFire for communications equipment for volunteer fire fighters.

Exhibit G



RIO VISTA FIRE DEPARTMENT

350 Main Street | Rio Vista, CA. 94571
Ph: 707.374.2233 | F: 707.374.6324



August 2, 2019

River Delta Fire District
PO Box 541
Isleton, CA. 95641

Attn: Board of Directors & Fire Chief Paul Cutino

RE: Termination of Automatic Aid Agreement (2005)

To Whom It May Concern,

This letter is to serve as our written notice of intent to terminate the Automatic Aid Agreement (enclosed) dated 12/3/2005. Our notification is in accordance with the termination clause contained on Page 1 of the agreement (30-day notice in writing).

Please be advised that on September 2, 2019 at 17:00 hours, the Rio Vista Fire Department will suspend "automatic" responses to the River Delta Fire District. Future assistance will be under Master Mutual Aid in accordance with Policies for out-of-county mutual aid and may only be filled when staffing levels and available apparatus allow.

It has been a pleasure to work closely with the District over the last several years. We wish you continued success and all the best in future endeavors.

Sincerely,



Jeff Armstrong, Fire Chief

Encl. 2005 Automatic Aid Agreement (copy)

cc. Rio Vista City Manager, Delta Fire Protection District Board, Isleton Fire Department, Solano County Sheriff Dispatch Center & Sac Regional Dispatch Center.

*Providing contract services for the Delta Fire Protection District in Sacramento County
www.riovistacity.com/fire-department*

AUTOMATIC AID AGREEMENT

This Cooperative Automatic Aid Agreement made and agreed to this 3 day of December, 1998, between Delta Fire Protection District, and the City of Rio Vista Fire Department, hereinafter called Rio Vista, and the Isleton Fire Protection District, and the City of Isleton Fire Department, hereinafter called Isleton.

WITNESSETH

Whereas, Rio Vista maintains and operates a fire protection organization in the City of Rio Vista and Southwest Sacramento County;

And

Whereas, Isleton maintains and operates a fire protection organization in the City of Isleton and Southeast Sacramento County;

And

Whereas, Rio Vista and Isleton are desirous of additional fire protection service in their adjacent areas especially in providing additional manpower to cover the OSHA two in two out regulation.

Now Therefore, the parties hereto agree as follows,

Rio Vista agrees to furnish a fire engine and crew to all structure fires in the Isleton City and District.

Isleton agrees to furnish a fire engine and crew to all structure fires in the Rio Vista and Delta District.

Notwithstanding the above, no response shall require that Rio Vista or Isleton deplete its own fire protection resources to the detriment of its normal fire protection responsibilities.

The assurance of cooperation set forth herein shall constitute the sole considerations for the performance hereof and neither party shall be obligated to reimburse the other on account of any action taken or aid rendered hereunder or for any use of material, damage to equipment, facilities, or liability incurred which may occur in the course of rendering the services herein provided for.

This agreement shall remain in full force and effect unless terminated by Rio Vista or Isleton giving to the other thirty (30) days notice in writing of such termination.

IN WITNESS WHEREOF, the parties hereto have caused this agreement to be executed as of the day and year first herein above written.

RESOLUTION 98-95

RESOLUTION APPROVING AUTOMATIC AID AGREEMENT BETWEEN
DELTA PROTECTION DISTRICT, CITY OF RIO VISTA FIRE
DEPARTMENT, ISLETON PROTECTION DISTRICT
AND THE CITY OF ISLETON FIRE DEPARTMENT

BE IT HEREBY RESOLVED BY THE CITY COUNCIL OF THE CITY OF RIO VISTA that said Council hereby approves of the AUTOMATIC AID AGREEMENT between Delta Fire Protection District, the City of Rio Vista Fire Department, the Isleton Fire Protection District and the City of Isleton Fire Department, a copy of which is attached hereto as Exhibit "A" and incorporated herein by this reference. Under said agreement, Delta Protection District and the City of Rio Vista Fire Department between them agree to furnish a fire engine and crew to all structure fires in the Isleton City and District, and Isleton Fire Protection District and the City of Isleton Fire Department, between them, agree to furnish a fire engine and crew to all structure fires in the City of Rio Vista and the Delta District. Said agreement may be terminated upon thirty (30) days notice.

BE IT FURTHER RESOLVED that the Mayor is authorized to execute said agreement on behalf of the City and to take such other action as may be necessary to carry out the terms and conditions contained therein.

I, ANITA REINEKE, CITY CLERK OF THE CITY OF RIO VISTA, and ex-officio Clerk of the City Council of said City, do hereby certify the above and foregoing to be a full, true and correct copy of a Resolution of said City Council which was regularly introduced, passed and adopted by said City Council at a regular meeting thereof, by the following vote:

AYES: COUNCILMEMBERS	<u>Alphin, Bidou, Coglianese, DeSilva, Harris</u>
NOES: COUNCILMEMBERS	<u>None</u>
ABSENT: COUNCILMEMBERS	<u>None</u>

WITNESS my hand and seal of said City this third day of December, 1998.


ANITA REINEKE, CMC/AAE, CITY CLERK

COPY

